

THE COMMONS MAKERSPACE

# INTRODUCTION TO SEWING!



PRESENTED BY: ADITI JOSHI

THE COMMONS  
QEII 2023

# INTRO TO SEWING MACHINE:

Our Sewing machine is the Singer Stylist | 7200 Series & S800



## HOW TO ADD TOP THREAD TO THE MACHINE:

STEP 1:

Choose the top thread color and select the matching bobbin thread. (You can choose same colors or make a contrast selection.)



STEP 2:

Remove the top cap.

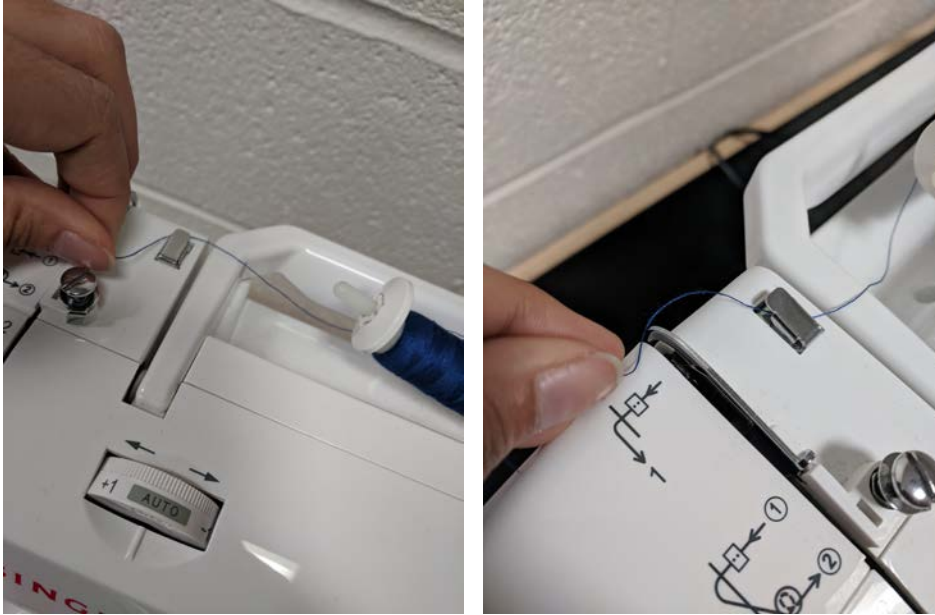


And then insert the top thread on the holder and add the top cap back. (This will lock the top thread in place.)



STEP 3:

Now we take the string and move it along the nicks and hooks to finally the needle. (YEY)

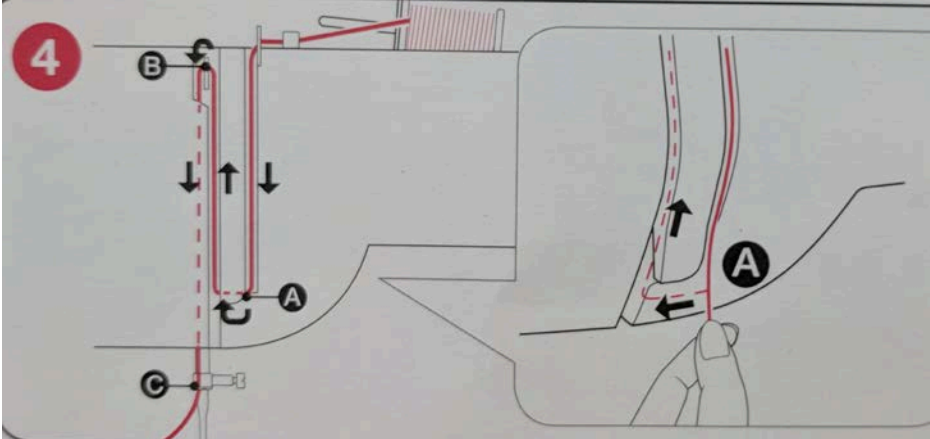


Firstly, pull the string in front of the hook, and then under no. 1 hook.  
Then drag it down the line following arrow no. 2.



Then up arrow no.3 and to no. 4, there is another hook on number 4. As shown below.

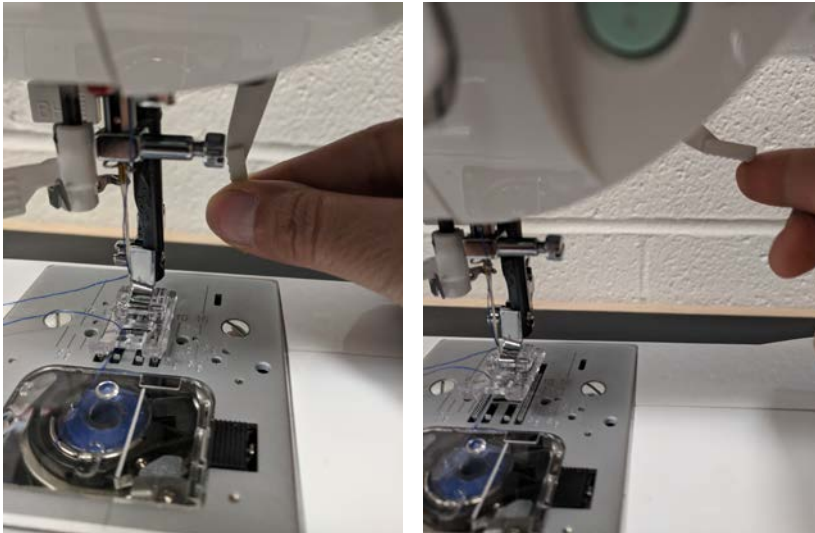






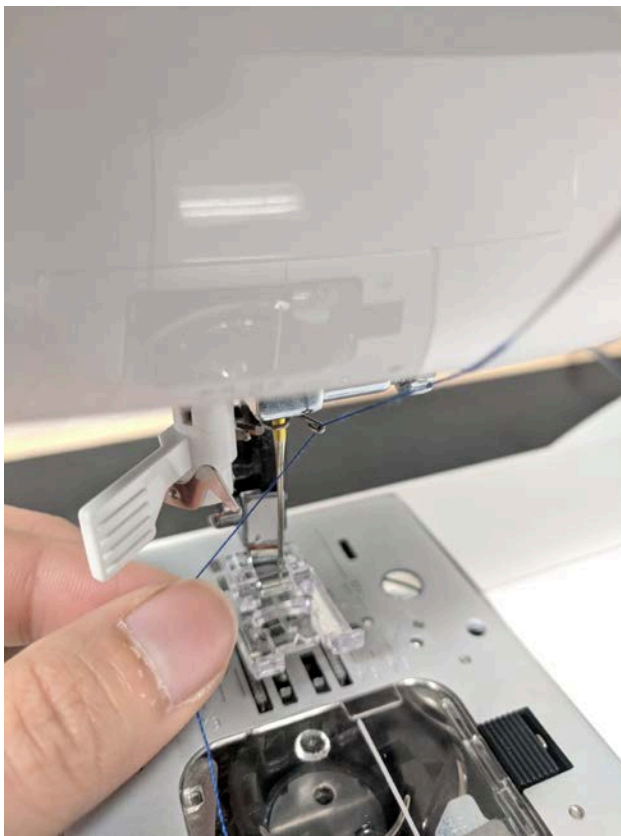
STEP 4:

Inserting string into the needle. Make sure that the needle lever is up to elevate the needle.



Firstly, drag the string and insert into the hook as shown.

Then insert the string into the needle hole at the bottom of the needle.



### HOW TO ADD BOBBIN THREAD TO THE MACHINE:

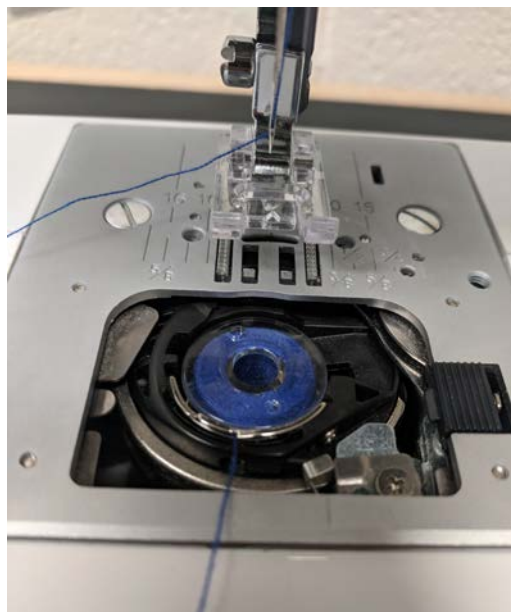
#### STEP 1:

Select the bobbin thread of your choice. Then open the hatch near the thread.

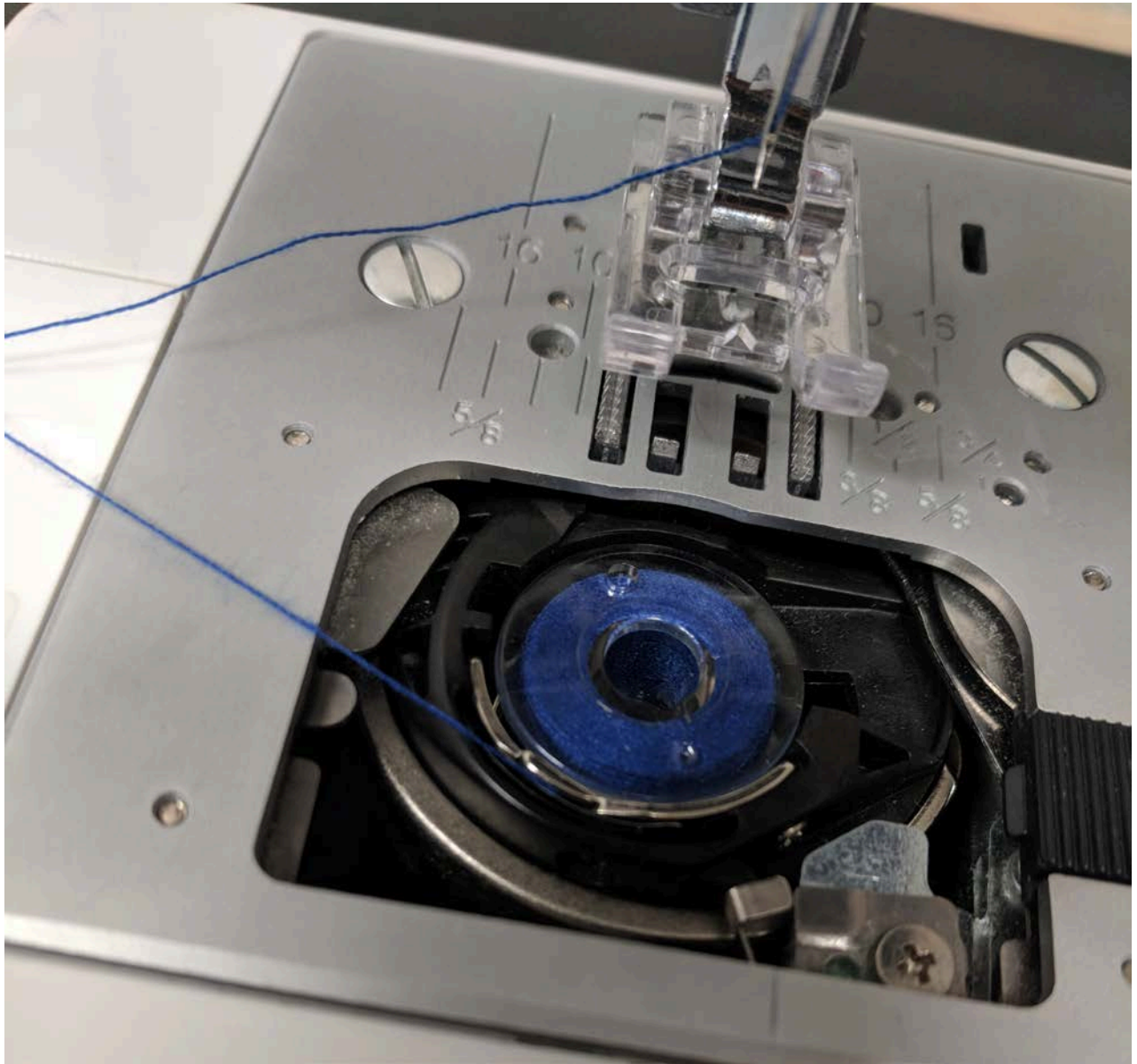


#### STEP 2:

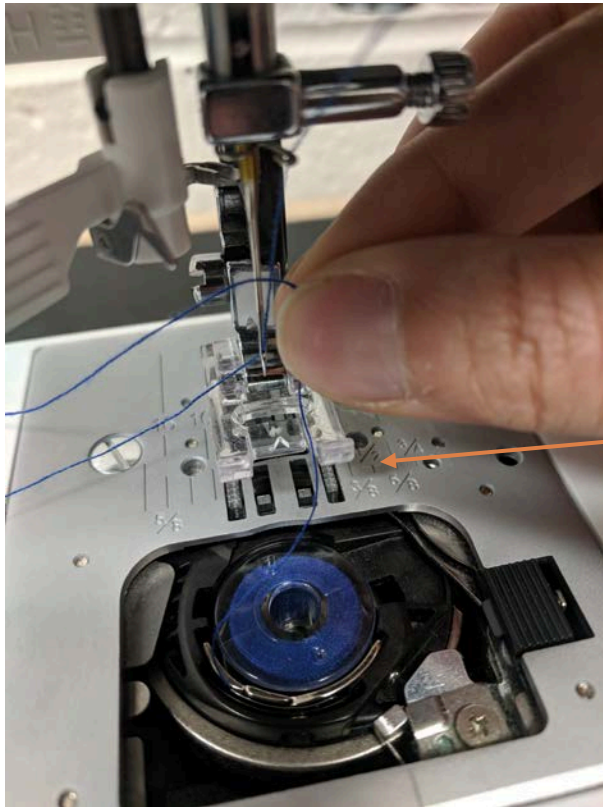
Insert the bobbin thread and loop the string around the small hook on the side.







Then we will take the string and enter it into the arrow shown below.



The foot



Now put the lid on. (Mission Accomplished!)

